



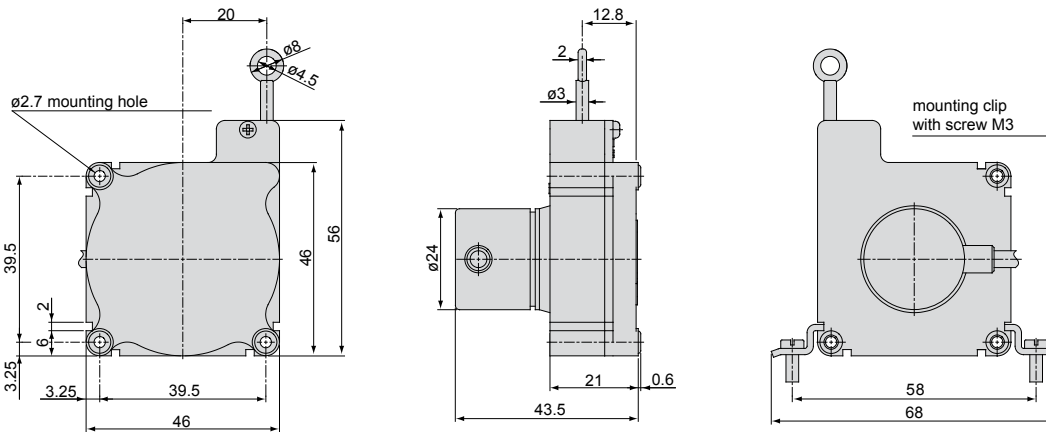
## FDMK46 digital Draw-wire sensor

- Robust plastic housing
- Customized versions for OEM
- Incremental encoder

The miniature draw-wire sensors of the FDMK series are specially designed for use in high-volume production. Due to the favorable price and the compact size of the sensor, new potential designs and cost optimization are the benefits to the user.



### FDMK46



## ■ Technical data

Model			<b>FDMK46-1250</b>
Output			E/E830
Measuring range			1250mm
Linearity	encoder	±0.05% FSO	0.625mm
Resolution			4 Pulses/mm
			0.25mm
Sensor element			incremental encoder
Temperature range			-20 ... +80°C
Material	housing		plastic
	draw wire		coated polyamid stainless steel (ø 0.36mm)
Wire mounting			eyelet
Sensor mounting			mounting holes / mounting grooves
Wire acceleration			appr. 5g
Wire retraction force (min)			appr. 1N
Wire extension force (max)			1.5N
Protection class			IP54
Electrical connection			cable radial, 1m
Weight			appr. 120g

FSO = Full Scale Output

## ■ Ordering code

<b>FDMK46 - 1250 - E</b>	
	Output option: encoder E (5 ... 24VDC) encoder E830 (8 ... 30VDC)
	Measuring range in mm
FDMK46	

LEADERS IN SENSORS & HEAVY DUTY JOYSTICKS

### ALTHERIS bv

Scheveningseweg 15  
2517 KS DEN HAAG  
The Netherlands

+31 (0)70 3924421

+31 (0)70 3644249

Offices in : Benelux | Germany | France | UK | Italy | USA

www.altheris.com

sales@altheris.nl

**ALTHERIS**  
SENSORS & CONTROLS