



GC-485

Ultra precision Digital I/O Gage head

GC-485 DigiSense Gage Head is available in five bipolar measurement ranges, with standard strokes from $\pm .050$ inches to ± 1.0 inch. The single ended 8.5 to 30.0 volt dc input and two-wire, addressable RS-485 output, make the GC-485 ideally suited to factory automation applications. Direct digital output eliminates the need for expensive and error prone analog to digital conversion. The sensor signal is scaled into calibrated engineering units, by the internal microprocessor, using factory computed conversion tables, thus providing a traceable measurement without need of an on-site calibration. A certificate of calibration is shipped with every sensor.



Features

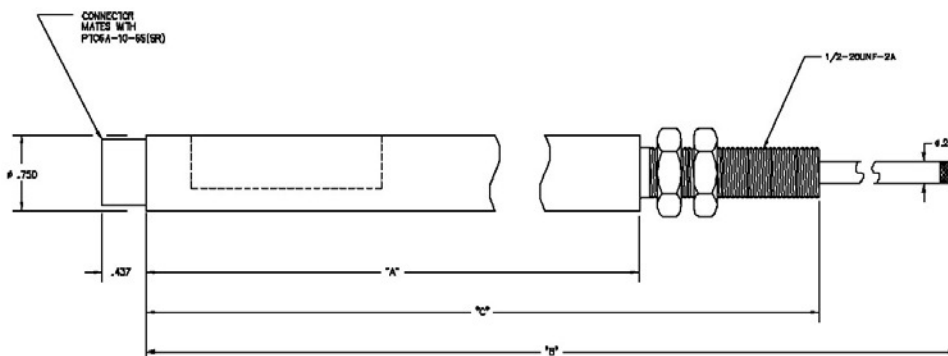
- .05% Linearity
- Up to 32 Sensors on one 2-wire network
- 100% Interchangeability without Calibration
- Hermetically Sealed Design
- MOD-Bus ASCII and RTU Output
- Factory Calibrated English or Metric Units
- Programmable Filtering
- Tare and Un-Tare
- Min, Max, and TIR
- Velocity Output

Options

- Special Contact Tips
- Special OEM Protocols
- Mating Connector
- Air Extend

Dimensions

in (mm)



Applications

- Roller Gap Control
- In-Process Wet Grinding
- Handheld Gages
- X-Y Positional Feedback

Wiring

| WIRING | |
|----------|---|
| POWER IN | E |
| COMMON | D |
| A | A |
| B | B |

■ Specifications

GC-485 Specifications

| Model Number | GC-485-050 | GC-485-125 | GC-485-250 | GC-485-500 | GC-485-1000 |
|--------------------------|---|----------------|----------------|-----------------|----------------|
| Gaging Range | +/- 0.050" | +/- 0.125" | +/- 0.250 " | +/- 0.500 " | +/- 1.000" |
| | +/- 1.27mm | +/- 3.175 mm | +/- 6.85 mm | +/- 12.7 mm | +/- 25.4 mm |
| Pretravel | 0.25" (6.35 mm) | 0.28" (7.1 mm) | 0.18" (4.5 mm) | 0.20" (5.08 mm) | 0.10" (2.5 mm) |
| Overtravel | 0.31" (7.87 mm) | 0.29" (7.4 mm) | 0.03" (0.8mm) | 0.35" (8.9 mm) | 0.10" (2.5mm) |
| Dimensions | | | | | |
| A | | | | | |
| Inches | 4.06 | 4.90 | 5.76 | 7.46 | 9.42 |
| Millimeters | 103.1 | 124.5 | 146.3 | 189.5 | 239.2 |
| B | | | | | |
| Inches | 6.48 | 7.30 | 8.16 | 12.93 | 14.87 |
| Millimeters | 164.6 | 185.4 | 207.3 | 328.4 | 377.6 |
| C | | | | | |
| Inches | 5.42 | 6.27 | 7.13 | 10.45 | 12.41 |
| Millimeters | 137.7 | 159.3 | 181.1 | 265.4 | 315.2 |
| Input Voltage | 8.5 to 30 Vdc | | | | |
| Input Current | 50 mA (Nominal) | | | | |
| Operating Temperature | -13F to 185F (-25C to 85C) | | | | |
| Storage Temperature | -65F to 200F (-55C to 95C) | | | | |
| Native Protocols | ModBus RTU | | | | |
| RS-485 | Mod Bus ASCII | | | | |
| | Omega I-Series | | | | |
| Output (units) | Metric & English | | | | |
| Linearity | 0.05% full range | | | | |
| Resolution | 15-bit (minimum) | | | | |
| Repeatability | 25 µ-in | | | | |
| Stability | 0.1% at full range | | | | |
| T/C of Scale Factor | 0.025% /F max (0.05% /C max) | | | | |
| Shock Survival | 250g for 11 mS | | | | |
| Vibration Tolerance | 10g up to 2 kHz | | | | |
| Housing Construction | TIG Welded (400 Series Stainless Steel) | | | | |
| Environmental Protection | IP-68 (To 68-BAR) | | | | |
| Termination | 6-Pin MS Style Hermetic Connector | | | | |

■ Ordering information

| Part Number | Model |
|--------------|-------------|
| 02351011-000 | GC-485-050 |
| 02351012-000 | GC-485-125 |
| 02351013-000 | GC-485-250 |
| 02351014-000 | GC-485-500 |
| 02351015-000 | GC-485-1000 |

ALTHERIS bv

Scheveningseweg 15
2517 KS DEN HAAG
The Netherlands

+31 (0)70 3924421

+31 (0)70 3644249

Offices in : Benelux | Germany | France | UK | Italy | USA

www.altheris.com

sales@altheris.nl

LEADERS IN SENSORS & HEAVY DUTY JOYSTICKS

ALTHERIS
SENSORS & CONTROLS