

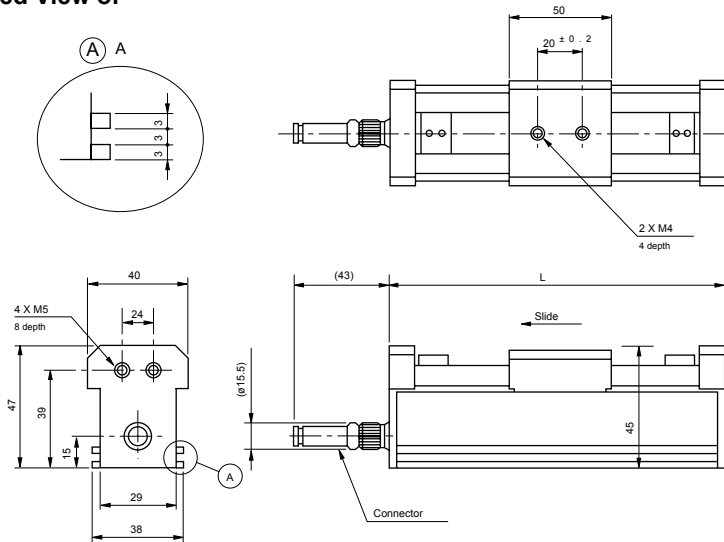


Model 40FLP

Conductive plastic (Dust proof type)

Standard dimensions

Enlarged View of



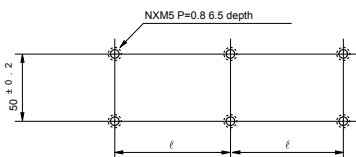
Model 40FLP500A

Specifications of Connector

Water-proof type
 Number of poles: 6 poles
 Electrical wire diameter
 to be connected: ø6.3mm max

Model No.	L
40FLP200A	360
40FLP300A	460
40FLP400A	560
40FLP500A	660
40FLP750A	910
40FLP1000A	1,160

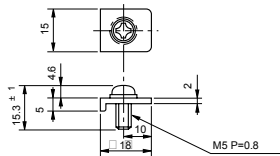
Panel Arrangements



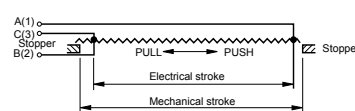
Stroke mm	200	300	400	500	750	1,000
Ø mm	260	340	400	260	300	420
Number of attached fixing plate	4	4	4	6	6	6

Note: For models 40FLP200A, 40FLP300A & 40FLP400A, 4 pcs Fixing Nails with M5X12 screw and spring washers for M5 are attached.
 For models 40FLP500A, 40FLP750A & 40FLP1000A, 6 pcs Fixing Nails with M5X12 screw and spring washers are attached.

Fixing Nail



Terminal Connection Diagram



Standard Model Nos.

40FLP200A	stroke	200mm
40FLP300A	stroke	300mm
40FLP400A	stroke	400mm
40FLP500A	stroke	500mm
40FLP750A	stroke	750mm
40FLP1000A	stroke	1,000mm

■ General Specifications

Model No.	40FLP200A	40FLP300A	40FLP400A	40FLP500A	40FLP750A	40FLP1000A
Standard Resistance Range	2k ~ 10kΩ	5k ~ 20kΩ	5k ~ 100kΩ	5k ~ 200kΩ		10k ~ 500kΩ
Total Resistance Tolerance	Standard Class	±20% (M)				
	Precision Class	±10% (M)				
Independent Linearity Tolerance	Standard Class	±0.5% (M)				
	Precision Class	±0.1% (M)				
	Super-precision Class	±0.05% (M)		-	-	
Resolution	Essentially Infinite					
Output Smoothness	Within 0.1% against input voltage					
Contact Resistance Variation	Within 2% C.R.V.					
Power Rating	1.5W	2.0W	2.5W	5.0W	7.5W	10.0W
Electrical Stroke	200±1mm	300±1mm	400±1mm	500±1mm	750±1mm	1000±1mm
Mechanical Stroke (MS) (Approx.)	250mm	305mm	405mm	505mm	755mm	1005mm
Insulation Resistance	Over 1,000M Ω at 500V.D.C.					
Dielectric Strength	1 minute at 900 V.A.C.					
Max. Working Voltage	500V					
Friction	Within 2N (200gf)					
Stopper Strength	Approx. 20N (2kgf)					
Resistance Temperature Coefficient	±400p.p.m./°C					
Mass	Approx. 1.2kg	Approx. 1.4kg	Approx. 1.6kg	Approx. 1.8kg	Approx. 2.3kg	Approx. 2.8kg

ALTHERIS bv

Scheveningseweg 15
2517 KS DEN HAAG
The Netherlands

+31 (0)70 3924421

+31 (0)70 3644249

Offices in : Benelux | Germany | France | UK | Italy | USA

www.altheris.com

sales@altheris.nl

LEADERS IN SENSORS & HEAVY DUTY JOYSTICKS

ALTHERIS
SENSORS & CONTROLS