



Model 200FCA Series

Incorporated Potentiometer with a Conductive Plastic resistive element

Nomenclature

S 200 FCA - 1 0 A - 0 0 0 0

S
S means special mechanical specifications not applicable to our standard.

200
200 means approx. size of base housing in mm.

FCA
FC means Foot Controller, A means long pedal type.

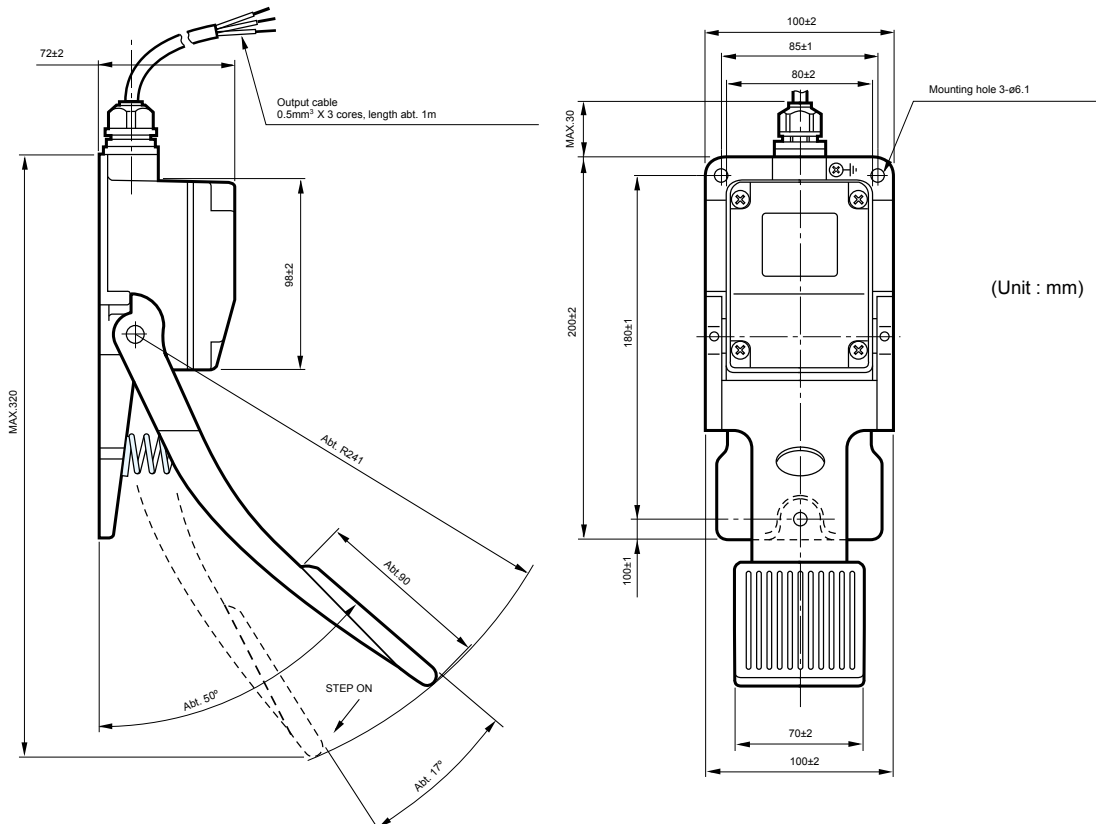
Special part number :
In case we produce customized product, we add 4-digit branch number.

0 ① Number of switches to be incorporated (Option).
 0--No switch incorporated.
 1--1 switch incorporated.
 2--2 switches incorporated.

A ② Rating of switch :
 A. B. C. ---Code-switch
 D. E. F. ---Micro-switch
 G---other switch

1 Number of potentiometers to be incorporated
 0--No potentiometer incorporated.
 1--1 potentiometer incorporated.
 2--2 potentiometers incorporated (Option).

Standard Dimensions



■ Standard Specifications

Mechanical Performance

Operating method : Stepping pedal type

Operating angle : Approx. 17°

Operating force : Standard spring return device : Automatically return to center.

Abt. 10N~22N (Abt. 1,000gf.~2,200gf.)

Operating temperature range : - 20°C~+65°C

Vibration : 10~55Hz 98m/s²

Shock : 294m/s²

Life expectancy : Approx. 2,000,000 operations

Mass : Approx. 1.2kg

Electrical Performance

Potentiometer incorporated : SFCP22E, 10kΩ ±20%, 0.3W, independent linearity tolerance 3% (conductive plastic resistance element)

Electrical rotating angle : Approx. 70°

Output smoothness : Below 0.2% against input voltage

Contact resistance variation : Below 5% C.R.V.

Resolution : Essentially infinite

Dielectric strength : 1 minute at 500V.A.C.

Insulation resistance : Over 1,000MΩ at 500V D. C.

Special Specifications Available

-With switch incorporated :

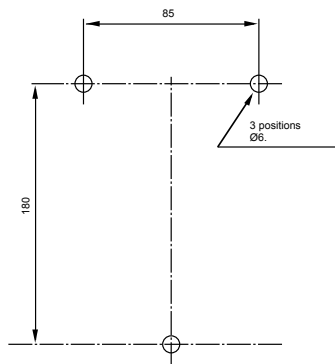
Regarding rating of switch

If you require pedal with one switch , unless specified, we supply the pedal with A version switch (code-switch with "ON" operation at about 3 from the beginning of stepping).

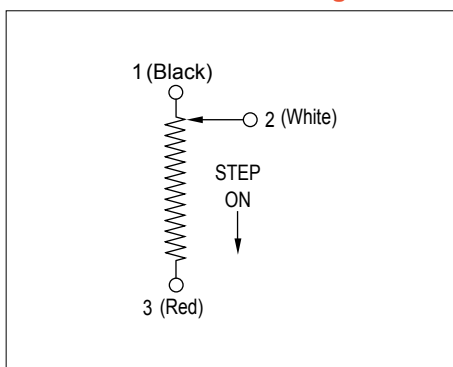
(Model S200FCA-11A)

- IP65 sealing
- 2 ganged potentiometer.
- Special resistance value on potentiometer.
- An intermediate tap on potentiometer.

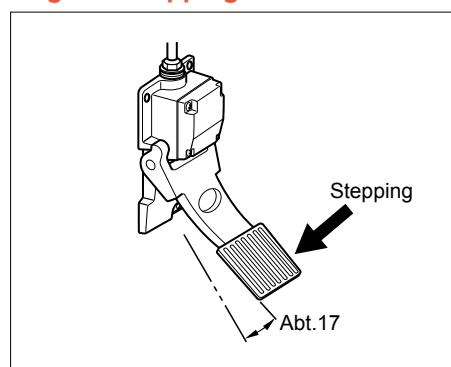
Standard Panel Arrangements



Terminal Connection Diagram



Angle of Stepping



200FCA-10
(standard)

ALTHERIS bv

Scheveningseweg 15
2517 KS DEN HAAG
The Netherlands

+31 (0)70 3924421

+31 (0)70 3644249

Offices in : Benelux | Germany | France | UK | Italy | USA

www.altheris.com

sales@altheris.nl

LEADERS IN SENSORS & HEAVY DUTY JOYSTICKS

ALTHERIS
SENSORS & CONTROLS