

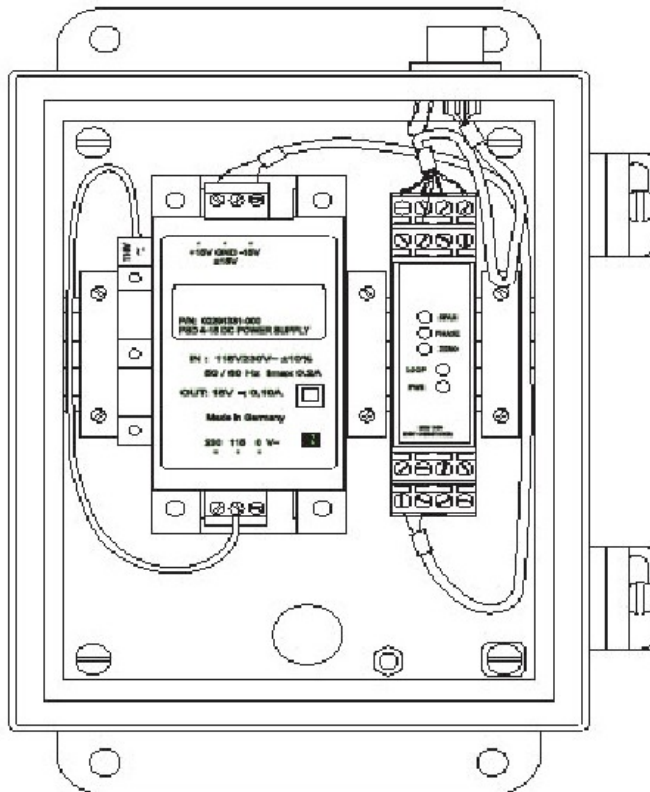


IEM 422

Process Control & Power Gen

The IEM 422 is a line-powered LVDT / RVDT compatible current transmitter designed for industrial process control applications. The IEM-422 consists of a DIN rail mount power supply and LVDT signal conditioner module pre-configured to supply a 4 to 20 mA output from a 115 or 230 volt AC supply. The IEM 422 supplies an ac sine wave excitation to the LVDT and then demodulates and amplifies the LVDT output. A full-wave synchronous demodulator eliminates quadrature and harmonics to maximize external noise rejection.

The IEM 422 is housed in a rugged NEMA 13 enclosure to protect it from dirt, dust, water and other contaminants commonly found in industrial environments. Power, input and signal output connections are made easy by using the conduit ports to make the appropriate connections. LVDT hookup is completed by mating to the box- mounted, sealed M/S-style bayonet connector.



■ Performance specifications

Power Requirement	115 V-ac / 240 V-ac
Transducer Excitation	3-Vrms (0.5-Volt switch selectable)
LVDT Drive Current	25 mA (maximum)
LVDT Input Impedance	125 Ohms (minimum @ 3-Vrms)
Excitation Frequency	2.5 kHz (5.0, or 10.0 kHz switch selectable)
Full Span Output Signal	4 to 20 mA
Zero Output	12 mA
Zero Adjustment Total Range	+/- 30% (FRO)
Frequency Response	3-dB down @ 250-Hz (1-kHz switch selectable)
Nonlinearity	≤ 0.02% of FS
Temperature Coefficient	± +/- 0.05% per degree F (fso)
Operating Temperature Range	-25 to 70C
Dimensions (L x W x H)	3.86 x 2.48 x 1.38 (inches)

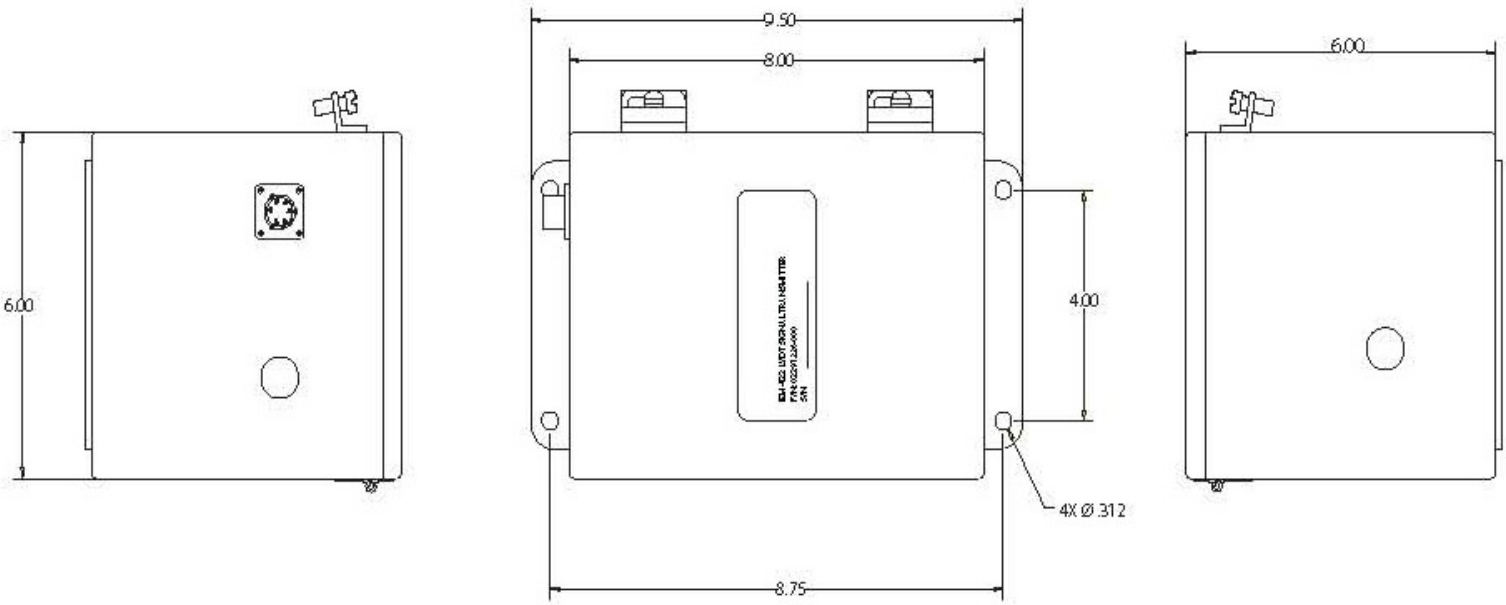
Features

- 4-20 mA Position Signal
- Compatible with All Altheris LVDT's & RVDT's
- NEMA-13 Rated Enclosure
- 115 / 230 Volt ac Line Operation
- Power & Loop Status LED's
- Adjustable Zero, Phase and Span

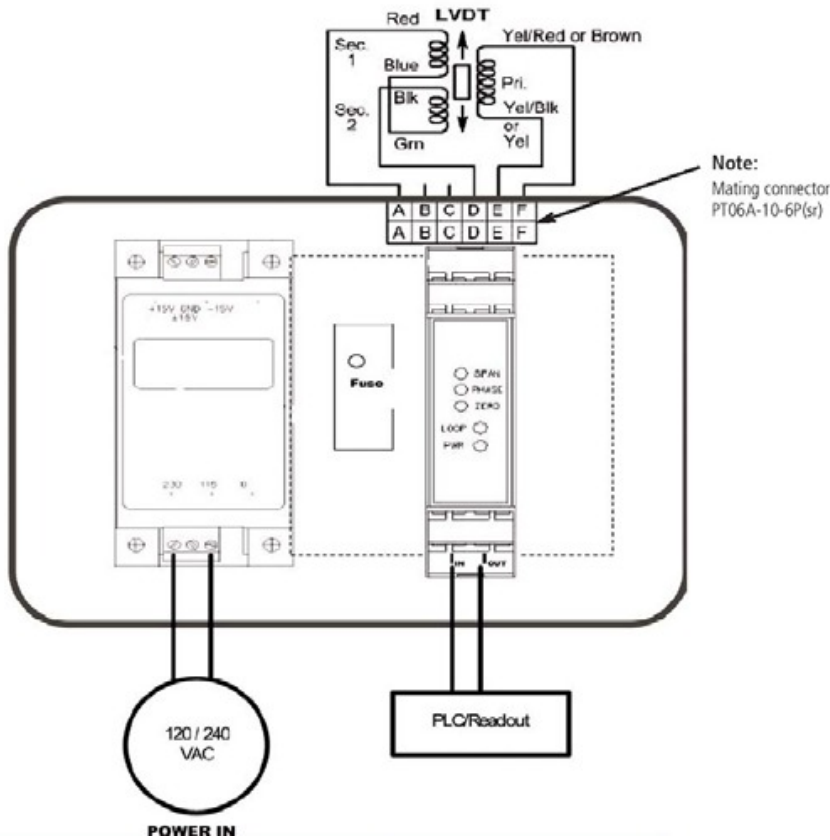
Applications

- Steam Turbine Throttle Valve Position
- Pulp Paper Industry
- Petrochemical Process Control
- Roller Gap Process Control

■ Dimensions



■ Wiring



ALTHERIS bv

Scheveningseweg 15
2517 KS DEN HAAG
The Netherlands

+31 (0)70 3924421
+31 (0)70 3644249

Offices in : Benelux | Germany | France | UK | Italy | USA

www.altheris.com
sales@altheris.nl

LEADERS IN SENSORS & HEAVY DUTY JOYSTICKS

