



## Compact modular digital display overview

### Highest accuracy, lowest price

#### ■ 4 digit loop power displays

IP66 - S315



Loop powered displays  
 Analog Input: mA  
 Power supply: By loop

#### ■ 4 digit displays and I/V analog input

IP66 -S311AK



Analog Input: mA, V  
 Power supply: 10-40 Vdc, 19-28 Vac

#### ■ 4, 6, 8, 11 digit universal analog input displays

S311A



Analog Input: mA, potentiometer, pt100 tC  
 (J,K,R,S,t,B,En)  
 Power supply: 10-40 Vdc, 19-28 Vac; 80-266 Vac

#### ■ 4, 6, 8, 11 digit frequency / digital input displays

S311D



Digital Input: Reed, npn, pnp, nam ur, photoelectric  
 variable reluctance, 24V pulse ttl  
 Power supply: 10-40 Vdc, 19-28 Vac; 80-266 Vac

Modular Display



Universal Input



Re-transmitte Output



Wide range Supply



High accuracy

**0,05%**

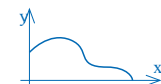
Relay alarms



Integration & totalisation



Advanced functions



■ S-line compact & modular displays for every applications

**S315 • Loop powered displays**

**S315  
S311AK**



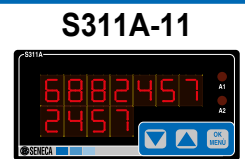
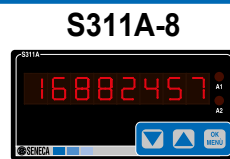
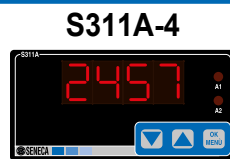
**S311AK • 4 digit display with I/V analog input**



<b>Power Supply</b>	By loop (max 30 V) Voltage drop (max 7 V)	By loop (max 30 V) Voltage drop (max 7 V)	10-40 Vdc, 19-28 Vac Power transducer: 17 V	10-40 Vdc, 19-28 Vac Power transducer: 17 V
<b>Accuracy</b>	Max error 0,05%	Max error 0,05%	Max error 0,05%	Max error 0,05%
<b>Display</b>	4 digit red LED	4 digit red LED	4 digit red LED	4 digit red LED
<b>Input</b>	4-20 mA	4-20 mA	Settable scale: 0-20 mA / 0-10 V	Settable scale: 0-20 mA / 0-10 V
<b>Programming</b>	Front keys	Front keys	Front keys	Front keys
<b>Dimension</b>	96 x 48 x 40 mm	130 x 80 x 60 mm	96 x 48 x 40 mm	130 x 80 x 60 mm

**S311A • Universal analog input indicators - totalizers**

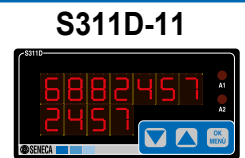
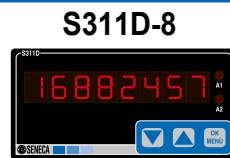
**S311A**



<b>Power Supply</b>	80-265 Vac; 10-40 Vdc / 19-28 Vac	80-265 Vac; 10-40 Vdc / 19-28 Vac	80-265 Vac; 10-40 Vdc / 19-28 Vac	80-265 Vac; 10-40 Vdc / 19-28 Vac
<b>Accuracy</b>	Max error 0,05%	Max error 0,05%	Max error 0,05%	Max error 0,05%
<b>Display</b>	4 digit red LED	6 digit red LED	8 digit red LED	4+7 digit red LED
<b>Input</b>	mA, V, Ohm, Pt100, TC	mA, V, Ohm, Pt100, TC	mA, V, Ohm, Pt100, TC	mA, V, Ohm, Pt100, TC
<b>Output</b>	mA, V	mA, V	mA, V	mA, V
<b>Programming</b>	Front keys	Front keys	Front keys	Front keys
<b>Optional board</b>	Nr 2 SPDT relay + ModBUS RTU interface + reset input			
<b>Dimension</b>	96x48x98 mm	96x48x98 mm	96x48x98 mm	96x48x98 mm

**S311D • Frequency / digital input indicators - totalizers**

**S311D**



<b>Power Supply</b>	80-265 Vac; 10-40 Vdc / 19-28 Vac	80-265 Vac; 10-40 Vdc / 19-28 Vac	80-265 Vac; 10-40 Vdc / 19-28 Vac	80-265 Vac; 10-40 Vdc / 19-28 Vac
<b>Accuracy</b>	Max error 0,05%	Max error 0,05%	Max error 0,05%	Max error 0,05%
<b>Display</b>	4 digit red LED	6 digit red LED	8 digit red LED	4+7 digit red LED
<b>Input</b>	Reed, npn (2 wire), npn 24 V (3 wire), pnp 24 V (3 wire), Namur, photoelectric, Hall, 24 V pulse, TTL, variable reluctance [0,00015 Hz – 10 kHz]			
<b>Output</b>	mA, V	mA, V	mA, V	mA, V
<b>Programming</b>	Front keys	Front keys	Front keys	Front keys
<b>Optional board</b>	Nr 2 SPDT relay + ModBUS RTU interface + reset input			
<b>Dimension</b>	96x48x98 mm	96x48x98 mm	96x48x98 mm	96x48x98 mm

**ALTHERIS bv**

Scheveningseweg 15  
2517 KS DEN HAAG  
The Netherlands

+31 (0)70 3924421

+31 (0)70 3644249

Offices in : Benelux | Germany | France | UK | Italy | USA

www.altheris.com

sales@altheris.nl

LEADERS IN SENSORS & HEAVY DUTY JOYSTICKS

