

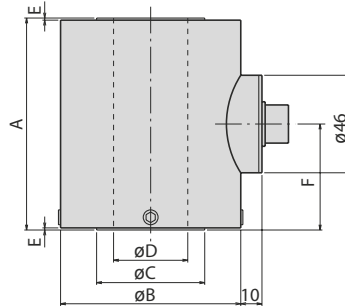


# CLC-NA

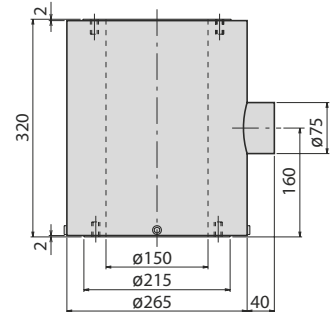
## Center-hole type Compression Load Cell 50kN ~ 5 MN



CLC-50KNA 3MNA

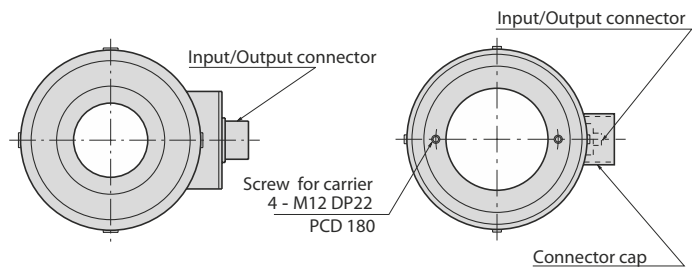


CLC-5MNA



The CLC-NA Load Cell is a center-hole-type load cell with a strain gauge mounted on a cylindrical strain sensing element. It is used to conduct pullout tests on anchors or laboratory Experiments.

Protection ratings : IP 65 equivalent



### ■ Dimensions

Type	A	B	C	D	E	F
CLC-50KNA	60	50	21	15	1	30
CLC-100KNA	70	60	29	20	1	35
CLC-200KNA	90	70	42	30	1	45
CLC-300KNA	100	85	51	35	1	50
CLC-500KNA	100	100	62	40	1	50
CLC-1MNA	150	130	90	60	2	75
CLC-2MNA	200	170	132	90	2	100
CLC-3MNA	250	205	164	115	2	125
CLC-5MNA	As per the figure					

### ■ Specifications

Type	CLC-50KNA	CLC-100KNA	CLC-200KNA	CLC-300KNA	CLC-500KNA	CLC-1MNA	CLC-2MNA	CLC-3MNA	CLC-5MNA
Capacity	50kN	100kN	200kN	300kN	500kN	1MN	2MN	3MN	5MN
Rated Output	1.5mV/V (3000×10 <sup>-6</sup> strain) ±0.5%								
Non-linearity	0.3% RO				0.5% RO				
Hysteresis	0.3% RO				0.5% RO				
Temperature effect on zero	0.01%/RO/°C								
Temperature effect on span	0.005%/°C								
Compensated temperature range	- 10 ~ + 60								
Temperature range	- 20 ~ + 70								
Over load	150%								
Input/output resistance	350Ω±1%								
Recommended exciting voltage	Less than 10V								
Allowable exciting voltage	20V								
Zero balance	5%RO								
Weight	1kg	2kg	2kg	3kg	4kg	8kg	19kg	34kg	67kg

Supplied cable : CT9-4N10/WP-STB (ø9mm 0.5mm<sup>2</sup> 4-core shielded chloroprene cable 10m)

LEADERS IN SENSORS & HEAVY DUTY JOYSTICKS

**ALTHERIS bv**

Scheveningseweg 15  
 2517 KS DEN HAAG  
 The Netherlands

+31 (0)70 3924421

+31 (0)70 3644249

Offices in : Benelux | Germany | France | UK | Italy | USA

www.altheris.com

sales@altheris.nl

**ALTHERIS**  
 SENSORS & CONTROLS