



CLL-NA / CLH-NA

Compression Load Cell 500kN ~ 2MN



The CLL-NA and CLH-NA load cells with a flat loading platform are used to conduct loading tests on cylindrical concrete specimens. A cylindrical concrete specimen can be directly set on the surface of the loading platform. Guide markings are shown on the loading platform so that each specimen different in size can be placed in alignment with each appropriate guide marking.

The CLL-NA is designed to test a cylindrical test specimen made of generally used concrete, while CLH-NA is designed mainly to test a cylindrical test specimen made of high-strength concrete. By using this load cell together with the compressometer, it is possible to measure load and strain simultaneously. Although both have handles, other models, CLL-500KNA and CLH-1MNA, do not have handles.

Protection ratings : IP 65 equivalent

■ CLL-NA Specifications

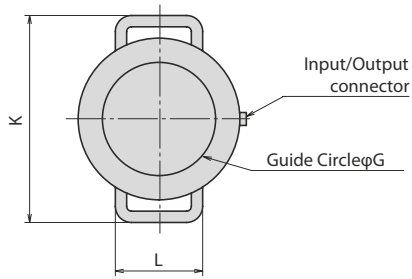
Type	CLL-500KNA	CLL-750KNA	CLL-1MNA
Applicable specimen	ø10×20cm	ø12.5×25cm	ø15×30cm
Capacity	500kN	750kN	1MN
Rated Output	1.5mV/V (3000×10 ⁻⁶ strain) ±0.5%		
Non-linearity	0.2%RO		
Hysteresis	0.2%RO		
Temperature effect on zero	0.01%RO/°C		
Temperature effect on span	0.01%/°C		
Compensated temperature range	- 10 ~ + 60		
Temperature range	- 20 ~ + 70		
Over load	150%		
Input/output resistance	350Ω±5%		
Recommended exciting voltage	Less than 10V		
Zero balance	5%RO		
Allowable exciting voltage	20V		
Weight	9kg	12kg	22kg

Supplied cable : CT9-4N10/WP-STB (ø9mm 0.5mm² 4-core shielded chloroprene cable 10m)

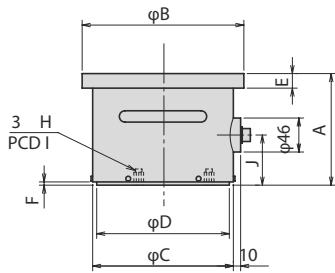
■ CLH-NA Specifications

Type	CLH-1MNA	CLH-1.5MNA	CLH-2MNA
Applicable specimen	ø10×20cm	ø12.5×25cm	ø15×30cm
Capacity	1MN	1.5MN	2MN
Rated Output	1.5mV/V (3000×10 ⁻⁶ strain) ±0.5%		
Non-linearity	0.2%RO		
Hysteresis	0.2%RO		
Temperature effect on zero	0.01%RO/°C		
Temperature effect on span	0.01%/°C		
Compensated temperature range	- 10 ~ + 60		
Temperature range	- 20 ~ + 70		
Over load	150%		
Input/output resistance	350Ω±5%		
Recommended exciting voltage	Less than 10V		
Zero balance	5%RO		
Allowable exciting voltage	20V		
Weight	10kg	14kg	26kg

Supplied cable : CT9-4N10/WP-STB (ø9mm 0.5mm² 4-core shielded chloroprene cable 10m)



Combination with Compressometer



■ Dimensions

Type	A	B	C	D	E	F	G	H	I	J	K	L
CLL-500KNA	115	160	140	130	25	1	102	M10DP10	80	45		
CLH-1MNA												
CLL-750KNA	137	195	170	160	25	2	127	M10DP12	96	55	254	114
CLH-1.5MNA												
CLL-1MNA	155	220	190	180	25	2	153	M12DP15	124	65	280	120
CLH-2MNA												

ALTHERIS bv

Scheveningseweg 15
2517 KS DEN HAAG
The Netherlands

+31 (0)70 3924421

+31 (0)70 3644249

Offices in : Benelux | Germany | France | UK | Italy | USA

www.altheris.com

sales@altheris.nl

LEADERS IN SENSORS & HEAVY DUTY JOYSTICKS

ALTHERIS
SENSORS & CONTROLS