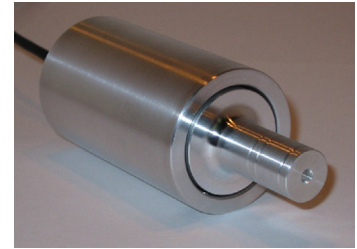




FLF325 High Accuracy Web Tension Loadcell Standard Ranges 50, 100, 200 and 500N (5 to 50kg)

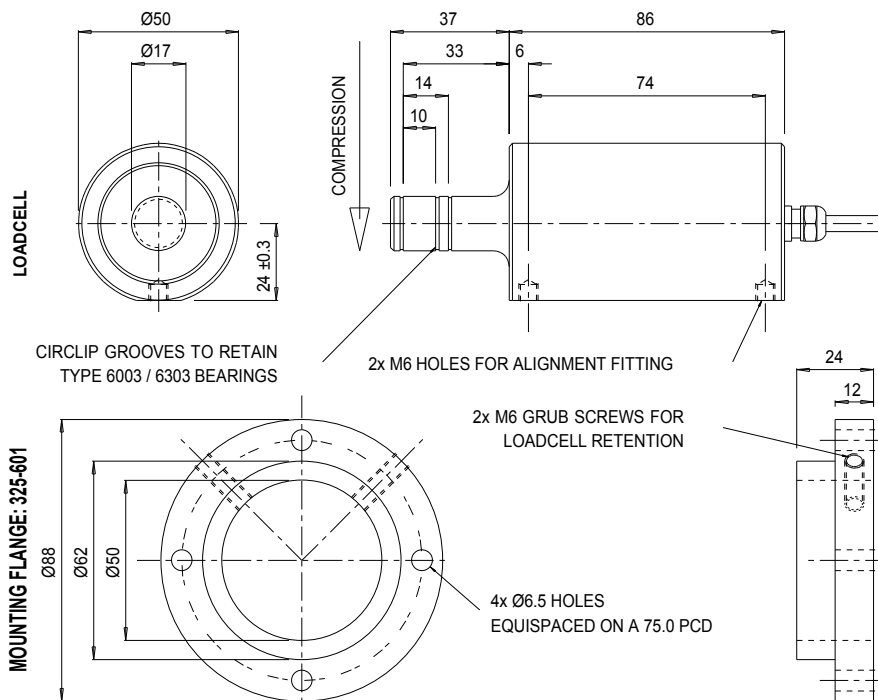
- Very high precision
- Overload stop
- Precision alignment tool facility
- Standard bearing mounting
- Mounting foot provision
- Optional mounting flange



ALTHEN
MESS- UND SENSORTECHNIK

This high precision web tension loadcell is designed and built to meet the needs of machine designers, installation fitters and end users by the incorporation of alignment features with maximum flexibility. The high performance of this loadcell is not compromised by the relatively large errors that can be produced by imprecise installation.

We are happy to design variants of this loadcell to meet your specific requirements. Please consult our engineering department.



Specifications

Parameter	Value	Unit
Non-linearity - Terminal	±0.03	% RL
Hysteresis	±0.03	% RL
Creep - 20 minutes	±0.05	% AL
Repeatability	±0.01	% RL
Rated output - Nominal	1.2	mV/V
Rated output - Rationalised	1.0	mV/V
Rationalisation tolerance	±0.1	% RL
Zero load output	±4	% RL
Temperature effect on rated output per °C	±0.005	% AL
Temperature effect on zero load output per °C	±0.01	% RL
Temperature range - Compensated	-10 to +50	°C
Temperature range - Safe	-10 to +80	°C
Excitation voltage - Recommended	10	V
Excitation voltage - Maximum	10	V
Bridge resistance	350	Ω
Insulation resistance - Minimum at 50Vdc	500	MΩ
Overload - Safe	50	% RL
Overload - Ultimate	200	% RL
Weight - Nominal (excluding cable)	380	g

All standard ranges are manufactured in aluminium.

Structural stiffness – Nominal					
Range (N)	Stiffness (N/m)	Range (kN)	Stiffness (N/m)	Range (N)	Stiffness (N/m)
50	8.3 x 10 ⁵	200	1.5 x 10 ⁶		
100	1.1 x 10 ⁶	500	2.0 x 10 ⁶		

Notes

- 1. AL = Applied load.
- 2. RL = Rated load.
- 3. Temperature coefficients apply over the compensated range.

Connections

The loadcell is fitted with 2 metres of PVC insulated 4 core screened cable type 7-2-4C.

Excitation + = Red Signal + = Yellow Screen = Orange
 Excitation - = Blue Signal - = Green

The screen is not connected to the loadcell body.

Ordering codes

See the loadcell ordering code sheet for more details. Add range in the required units.	
FLF325CF00H0	Compression, unrationalised

ALTHERIS bv

Scheveningseweg 15
 2517 KS DEN HAAG
 The Netherlands

+31 (0)70 3924421

+31 (0)70 3644249

Offices in : Benelux | Germany | France | UK | Italy | USA

www.altheris.com

sales@altheris.nl

LEADERS IN SENSORS & HEAVY DUTY JOYSTICKS

