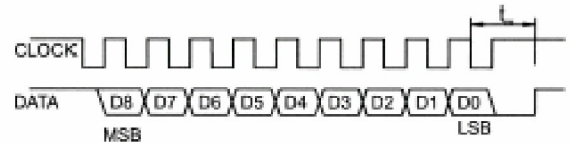




### RM22-S Binary Synchro-Serial Outputs

Power supply	5V DC / 20 mA
Resolution	max. 9bit (512 state / rev.)
Hysteresis	0.5 bit at 9 bit resolution
Accuracy	± 1bit at 9 bit resolution
Repeatability	< 0.1bit
Data outputs	Serial data (RS422)
Data inputs	Clock (RS422)
Cable length	up to 100 m (at 1MHz)

Timing diagram

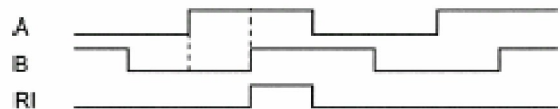


$t_r$ : 20-40µs  
Frequenza clock: ≤ 1 MHz

### RM22-I Incremental Outputs

Power supply	5V DC / 30 mA
Output TTL signals	A, B, RI, , , (RS 422)
Max. cable length	50 m

Timing diagram



### RM22-A Analogue Sinusoidal Outputs

Power supply	$V_{dd}$ = 5 VDC / 30 mA
Outputs	Buffered Sine & Cosine signals
	Signals amplitude $1V_{pp} \pm 0,1$ mV
	Signals offset $V_{dd} / 2 \pm 5$ mV

Signal characteristic

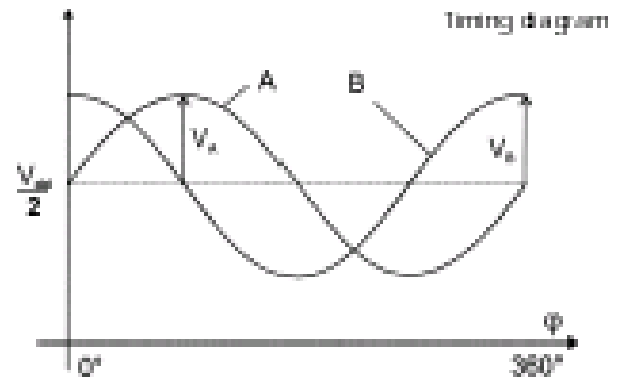
$$V_A - V_B = 5mV$$

$$V_{0A} - V_{0B} = 5mV$$

$$A - B = 0,1^\circ$$

$V_A$  = Sine amplitude  
 $V_B$  = Cosine amplitude  
 $V_{A0}$  = Sine offset  
 $V_{B0}$  = Cosine offset

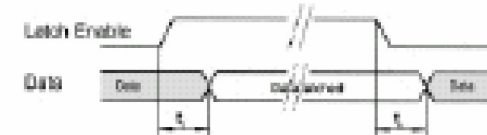
Max output frequency	500 Hz
Max cable length	3m



### RM22-P Binary Parallel Outputs

Power supply	5V DC / 20 mA
Output voltage	$V_H > 4V$ per $-I_H < 3mA$ $V_L < 1V$ per $I_L < 3mA$
Resolution	max. 9bit (512 state / rev.)
Hysteresis	0.5 bit at 9 bit resolution
Accuracy	± 1bit at 9 bit resolution
Repeatability	< 0.1bit
Output signals	D0 (LSB) ÷ D8 (MSB)
Data inputs	LE - latch enable input signal, active high
Cable length	30m (max.)

Timing diagram



$t_r$  = tempo di reazione < 1µs

LEADERS IN SENSORS & HEAVY DUTY JOYSTICKS

### ALTHERIS bv

Scheveningseweg 15  
2517 KS DEN HAAG  
The Netherlands

+31 (0)70 3924421

+31 (0)70 3644249

Offices in : Benelux | Germany | France | UK | Italy | USA

www.altheris.com

sales@altheris.nl

**ALTHERIS**  
SENSORS & CONTROLS