

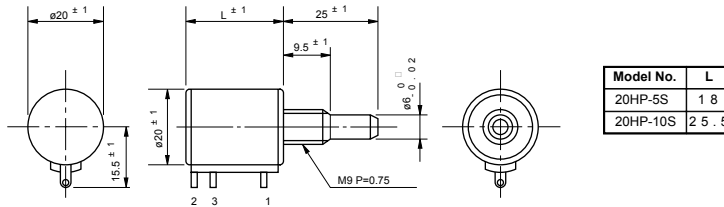


Model 20HP

Wirewound (Bushingmount Servomount)

Standard dimensions

Bushingmount type

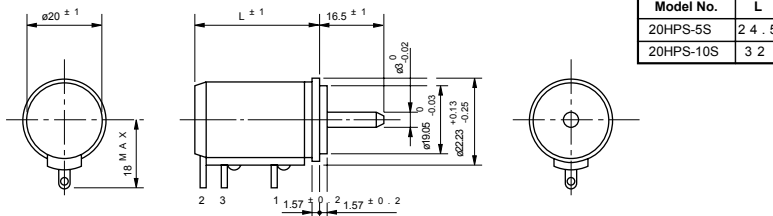


Note: 1 pc. inner teeth washer and 2 pcs. hex nuts are attached



Model 20HP-10S

Servomount type



Standard Model Nos.

Bushingmount type:

- 20HP-5S (5-turn)
- 20HP-10S (10-turn)

Servomount type:

- 20HPS-5S (5-turn)
- 20HPS-10S (10-turn)

Standard Model Nos.

Standard Resistance

- Range:** 100Ω to 50kΩ (5-turn)
 100Ω to 100kΩ (10-turn)

Max. Practical Resistance Value:

- 100kΩ (5-turn)
 150kΩ (10-turn)

Total Resistance Tolerance:

- Standard Class ±3%(H)
 Precision Class ±1%(F)

Independent Linearity Tolerance:

	5-turn	10-turn
Standard Class	±0.3%	±0.2%
Precision Class (within 5kΩ)	±0.2% (±0.25%)	±0.1% (±0.15%)

Power Rating:

- 1.0W (5-turn)
 2.0W (10-turn)

Noise:

Within 100Ω E.N.R.

Electrical Travel:

360° Xn ±5° (n: No. of turns)

Mechanical Travel:

360° Xn ⁺¹⁰₀° (n: No. of turns)

Insulation Resistance:

Over 100 MΩ at 1,000V D.C.

Dielectric Strength:

1 minute at 1,000 V.A.C.

Starting Torque:

Within 5mN·m (50gf·cm) (Bushingmount type)
 Within 3mN·m (30gf·cm) (Servomount type)

Stopper Strength:

Approx. 0.9N·m (9kgf·cm) (Bushingmount type)
 Approx. 0.6N·m (6kgf·cm) (Servomount type)

Max. Working Voltage:

900V

Resist. Temperature Coefficient of Wire:

±20p.p.m./°C

Mass:

Approx. 25g (5-turn)
 Approx. 30g (10-turn)

■ **Standard Resistance Values | No. Of Wire Turns | Resistance Wire Used**

Resist. Value (Ω)	100	200	500	1k	2k	5k	10k	20k	50k	100k
12HPC-5	1,100	1,500	2,000	2,500	2,400	3,200	3,900	4,800	5,500	※6,500
12HPC-10	1,800	2,200	3,200	4,000	5,000	5,000	6,400	7,800	10,000	11,000
Resist. Wire Used	Cu-Ni System					Ni-Cr System				

Note: Mark※shows value at special higher practical resistance

■ **Special Specifications Available**

3-turn type (S20HP-3S), lower resistance values (10Ω, 20Ω, 50Ω), extra taps (available up to 1 tap), multi-ganged (available up to 2 gangs), shaft with front and rear extension (rear shaft with 2mm dia. and 10mm length), shaft dia. (ø6.35mm) · bushing with inch dimensions, special machining on the shaft, simple sealed housing (except servomount type), slipping-clutch incorporated type (S20HP-10S-1782, 20mN·m~60mN·m), with a limit-switch adaptor, with pin terminals for p.c. board (20HP-5P, 20HP-10P).

LEADERS IN SENSORS & HEAVY DUTY JOYSTICKS

ALTHERIS bv

Scheveningseweg 15
2517 KS DEN HAAG
The Netherlands

☎ +31 (0)70 3924421

☎ +31 (0)70 3644249

Offices in : Benelux | Germany | France | UK | Italy | USA

🌐 www.altheris.com

✉ sales@altheris.nl

ALTHERIS
SENSORS & CONTROLS