



Series "BTM" Bolt Strain Gauge

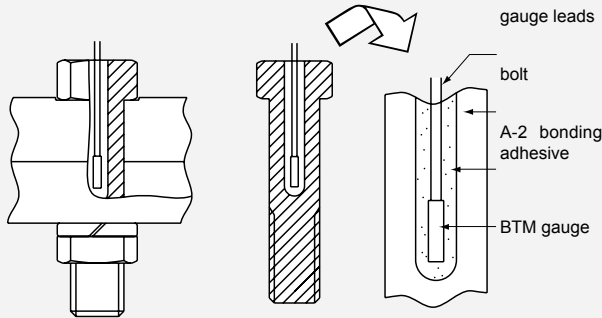


Compatible adhesive & Operational temperature
 A-2: -10~+80°C

Operational temperature -10~+80°C

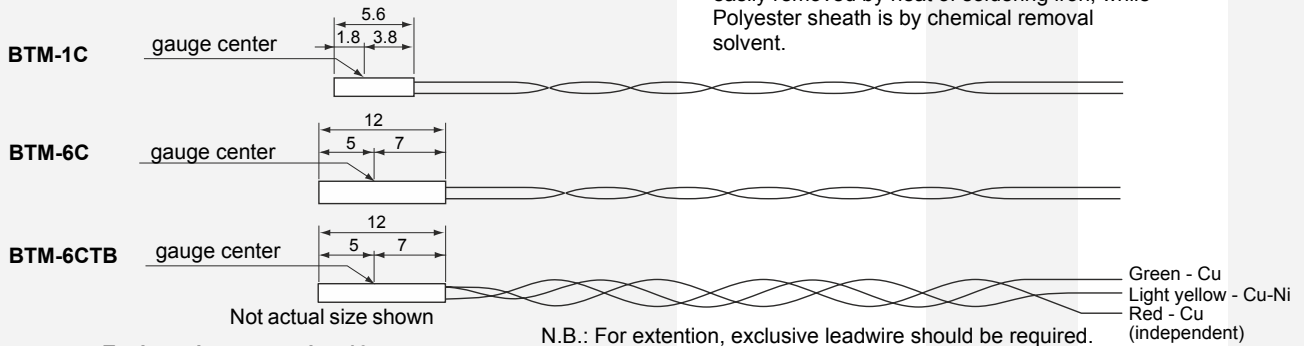
BOLT AXIAL STRAIN MEASUREMENT

Gauge pattern	Type	Gauge size		Backing		Resistance in Ω
		L	W	L	W	
These gauges are used for measurement of tensile strain of bolt. These are simply inserted into a pre-drilled hole in the bolt head together with A-2 bonding adhesive and cured. The gauge series is recommendable if an ordinary strain gauge cannot be mounted on the bolt surface. Accurate tensile force measurement is possible by calibrating the bolt after installing the gauge. •Single-element		L : length W : width (Unit : mm)				
	BTM-1C (Hole drilled: ϕ 1.6mm)	1	0.7	5.6	1.4	120
	BTM-6C (Hole drilled: ϕ 2.0mm)	6	1.0	12.0	1.7	120
	Temperature-integrated BTM-6CTB applicable in -10 +80 (Hole drilled: ϕ 2.0mm)	6	1.0	12.0	1.7	120



Gauge leads
 Polyurethane (Cu) ϕ 0.14 80mm to BTM-6C/BTM-1C
 Polyurethane (Cu) ϕ 0.14 80mm to BTM-6CTB
 Polyester (Cu-Ni) ϕ 0.12 80mm to BTM-6CTB

NB: Polyurethane sheath of the gauge leads is easily removed by heat of soldering iron, while Polyester sheath is by chemical removal solvent.

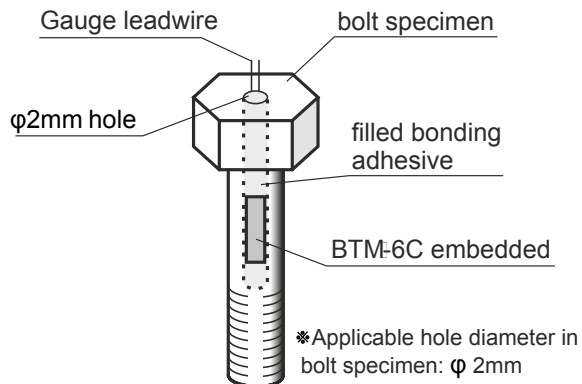


■ Syringe optional

Exclusive syringe for injecting A-2 adhesive into the pre-drilled hole before BTM-1C or BTM-6C gauge is embedded



■ Single element



LEADERS IN SENSORS & HEAVY DUTY JOYSTICKS

ALTHERIS bv

Scheveningseweg 15
 2517 KS DEN HAAG
 The Netherlands

+31 (0)70 3924421

+31 (0)70 3644249

Offices in : Benelux | Germany | France | UK | Italy | USA

www.altheris.com

sales@altheris.nl

ALTHERIS
 SENSORS & CONTROLS