



CS

The easy entry into multiple sensor installations Smart, safe and easy for -40 to 1030°C

- Temperature range: -40 to 1030°C
- Response time: 25 ms
- Optical Resolution 15:1
- Green LED alarm indication, aiming support, self- diagnostic or temperature code indication
- Usable up to 80°C ambient temperature without cooling
- Scalable analog output: 0 - 10 V or 0 - 5 V + alarm output or digital output
- USB programming interface, direct serial 9.6 kBaud interface
- Power supply: 5 - 30 VDC



■ General specifications

| | |
|----------------------|--|
| Environmental rating | IP63 |
| Ambient temperature | -20 - 80°C |
| Storage temperature | -20 - 85°C |
| Relative humidity | 10 - 95%, non condensing |
| Vibration | IEC 68-2-6: 3 G, 11 - 200 Hz any axis |
| Shock | IEC 68-2-27: 50 G, 11 ms any axis |
| Weight | 58 g |

■ Electrical specifications

| | |
|----------------------|--|
| Output / analog | 0 - 5 V or 0 - 10 V free scalable or alarm with adjustable voltage levels |
| Output / alarm | 0 - 30 V / 50 mA (open collector) |
| 3-state alarm output | adjustable threshold values and voltage level for: no alarm, pre-alarm, alarm |
| Output / digital | uni, bidirectional, 9.6 kBaud, 0/3 V digital level / USB optional |
| Input (0 - 10 V) | programmable functional input for external emissivity setting/ ambient temperature adjustment, triggered signal output or peak-hold function |
| LED functions | alarm indication, automatic aiming support, self diagnostic, temperature indication (via temp. code) |
| Cable length | 1 m (standard), 3 m, 8 m, 15 m |
| Power supply | 5 - 30 VDC |
| Current draw | 4 mA (without LED) / 10 mA |

■ Measurement specifications

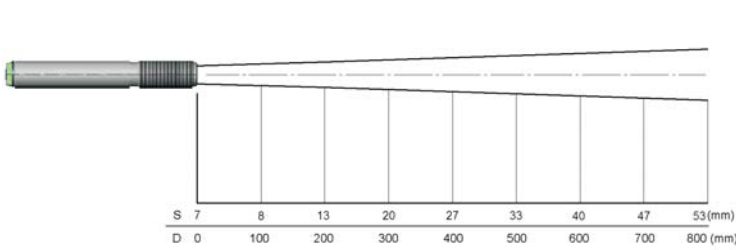
| | |
|--|---|
| Temperature range (scalable via software) | -40 - 1030°C |
| Spectral range | 8 - 14 μm |
| Optical resolution (90% energy) | 15:1 |
| CF-lens (optional) | 0.8 mm @ 10 mm |
| System accuracy (at ambient temperature 23 ±5°C) | ±1.5% or ±1.5°C ¹⁾ |
| Repeatability (at ambient temperature 23 ±5°C) | ±0.75% or ±0.75°C ¹⁾ |
| Temperature coefficient | ±0.05 K/K or ±0.05 %/K ³⁾ |
| NETD | 0.1 K ²⁾ |
| Response time (90%) | 25 ms (adjustable up to 999 s) |
| Emissivity/Gain (adjustable via 0 - 10 V DC input or software) | 0.100 - 1.100 |
| Transmissivity (adjustable via software) | 0.100 - 1.100 |
| Signal processing (parameter adjustable via software) | peak hold, valley hold, average; extended hold function with threshold and hysteresis |

¹⁾ object temperature > 0°C; whichever is greater

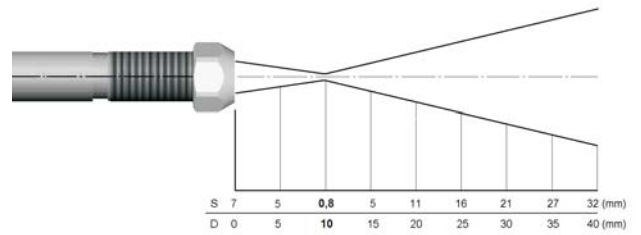
²⁾ at time constant 100 ms and T_{obj} 25°C

³⁾ for ambient temperatures <18°C and >28°C; whichever is greater

Optical specifications



15:1 optics



15:1 optics with CF-lens

Connections

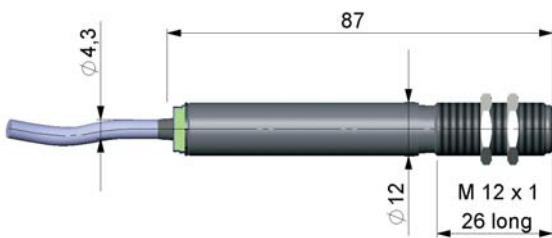


Connection analog with open collector alarm output

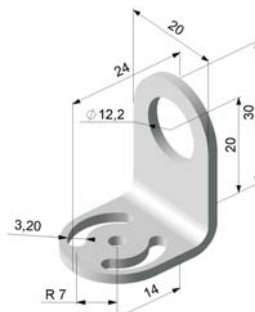


Connection digital with USB adapter cable

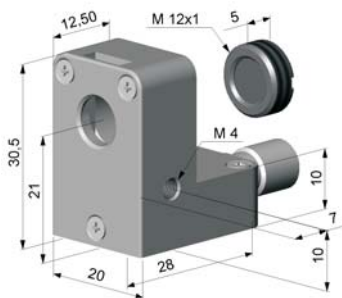
Dimensions/Accessories



Dimensions CS



Mounting bracket, fixed

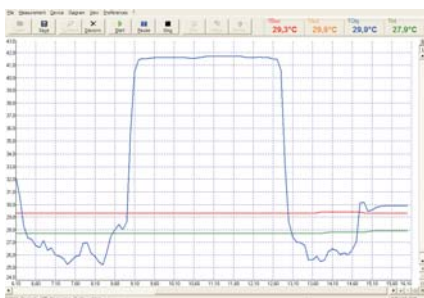


Air purge collar, optional with integrated CF-lens



CF-lens

Compact Connect software



- Software for easy sensor setup and remote controlling, supports multi tasking
- Graphic display for temperature trends and automatic data logging for analysis and documentation with 1 ms response time
- Adjustment of signal processing functions and programming of outputs and functional inputs of the sensor
- The software Compact Connect allows to customize the sensor to application needs of the user

LEADERS IN SENSORS & HEAVY DUTY JOYSTICKS

ALTHERIS bv

Scheveningseweg 15
2517 KS DEN HAAG
The Netherlands

+31 (0)70 3924421

+31 (0)70 3644249

Offices in : Benelux | Germany | France | UK | Italy | USA

www.altheris.com

sales@altheris.nl

ALTHERIS
SENSORS & CONTROLS